

UNIVERSITY OF TWENTE.



# ITC, ENSCHEDE, THE NETHERLANDS

Thesis semester kick-off

24 April 2023



ITC FACULTY OF GEO-INFORMATION SCIENCE AND EARTH OBSERVATION

\_\_\_\_\_



UNIVERSITY OF TWENTE.



TECHNISCHE  
UNIVERSITÄT  
DRESDEN

3

2



**Cartography M.Sc.**

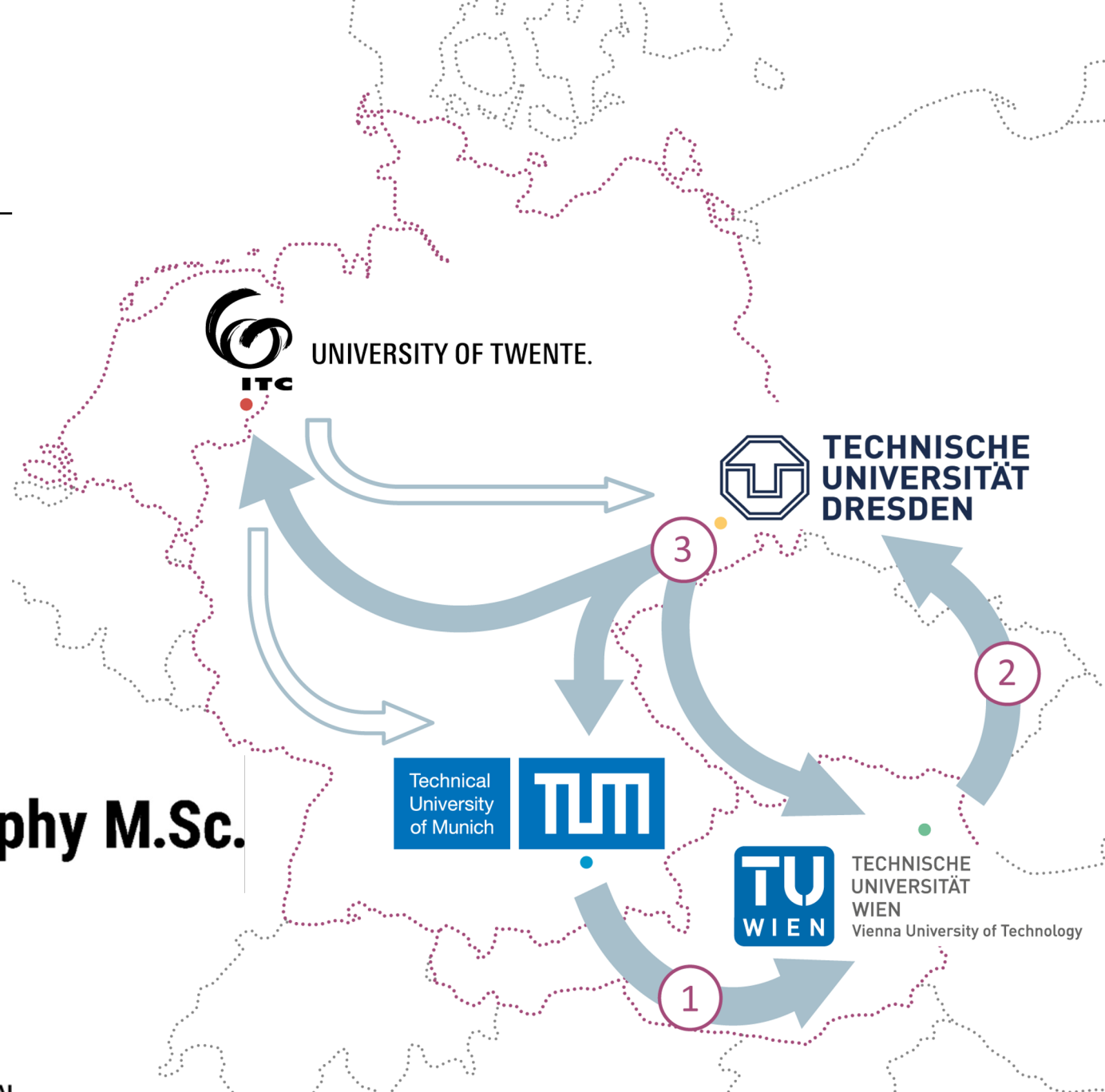


TECHNISCHE  
UNIVERSITÄT  
WIEN  
Vienna University of Technology

1



UNIVERSITY OF TWENTE.

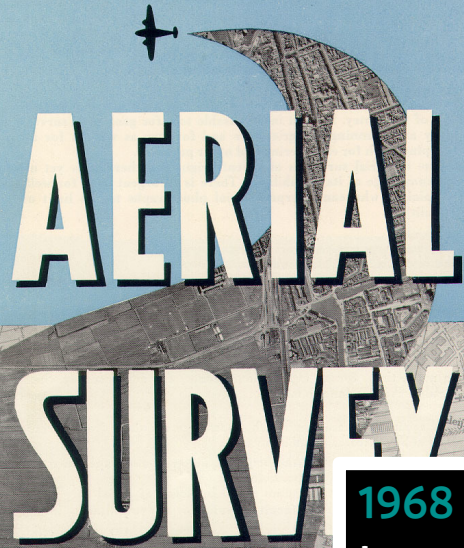


**ITC FACULTY OF  
GEO-INFORMATION SCIENCE  
AND EARTH OBSERVATION**



UNIVERSITY  
OF TWENTE.  
FACULTY ITC

*INTERNATIONAL TRAINING CENTRE FOR*



# AERIAL SURVEY

**1950**  
International  
Training Centre  
for Aerial  
Survey, ITC

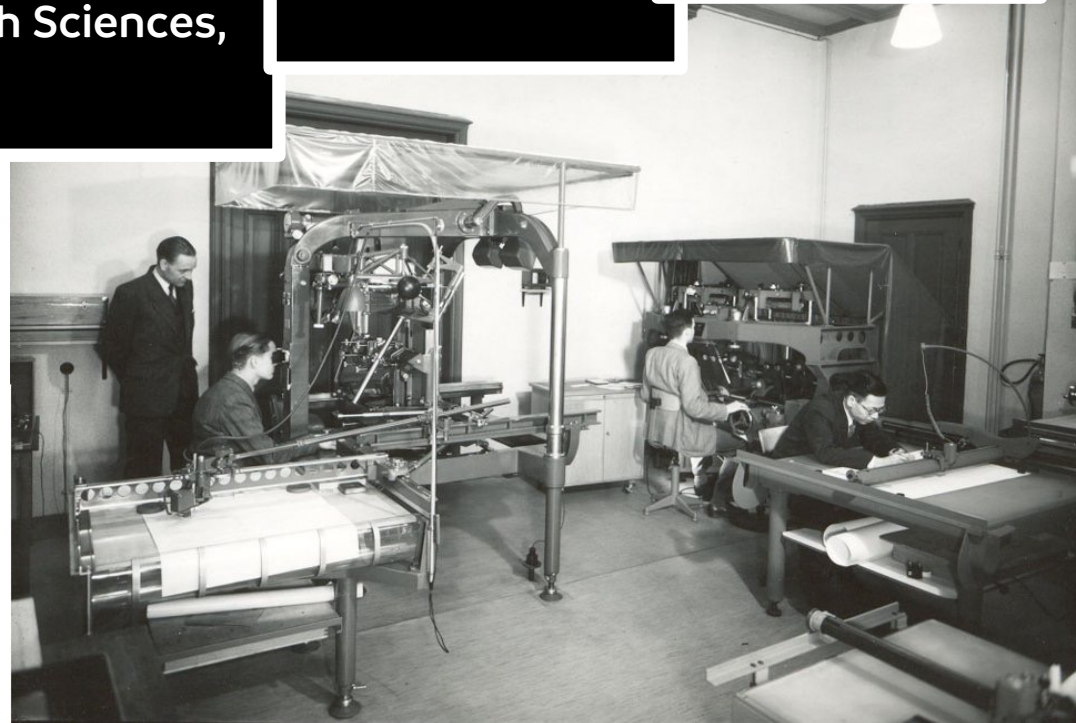
**1968**  
International  
Institute for  
Aerial Survey  
and Earth  
Sciences, ITC

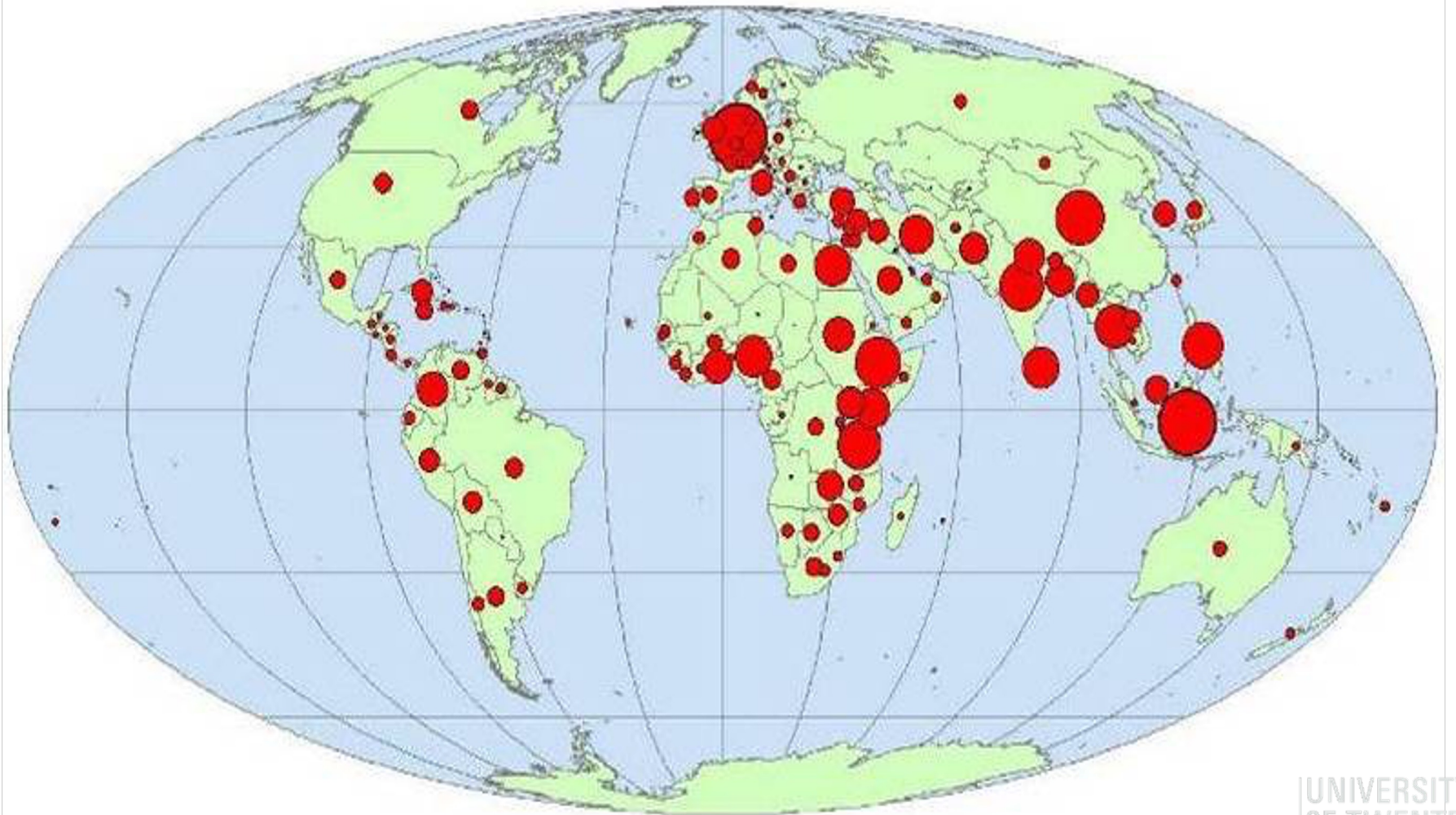
**1985**  
International  
Institute for  
Aerospace  
Survey and  
Earth Sciences,  
ITC

**2002**  
International  
Institute for  
Geo-Information  
Science and  
Earth  
Observation, ITC

**2010**  
Faculty of Geo-  
Information  
Science and  
Earth  
Observation,  
University of  
Twente

<https://www.itc.nl/alumni/70-years-of-ITC/>





## MASTER PROGRAMMES OFFERED BY FACULTY ITC

---

- MSc Geo-Information Science and Earth Observation
- MSc Spatial Engineering
- MSc Geographical Information Management and Applications (GIMA) – blended learning / joint programme

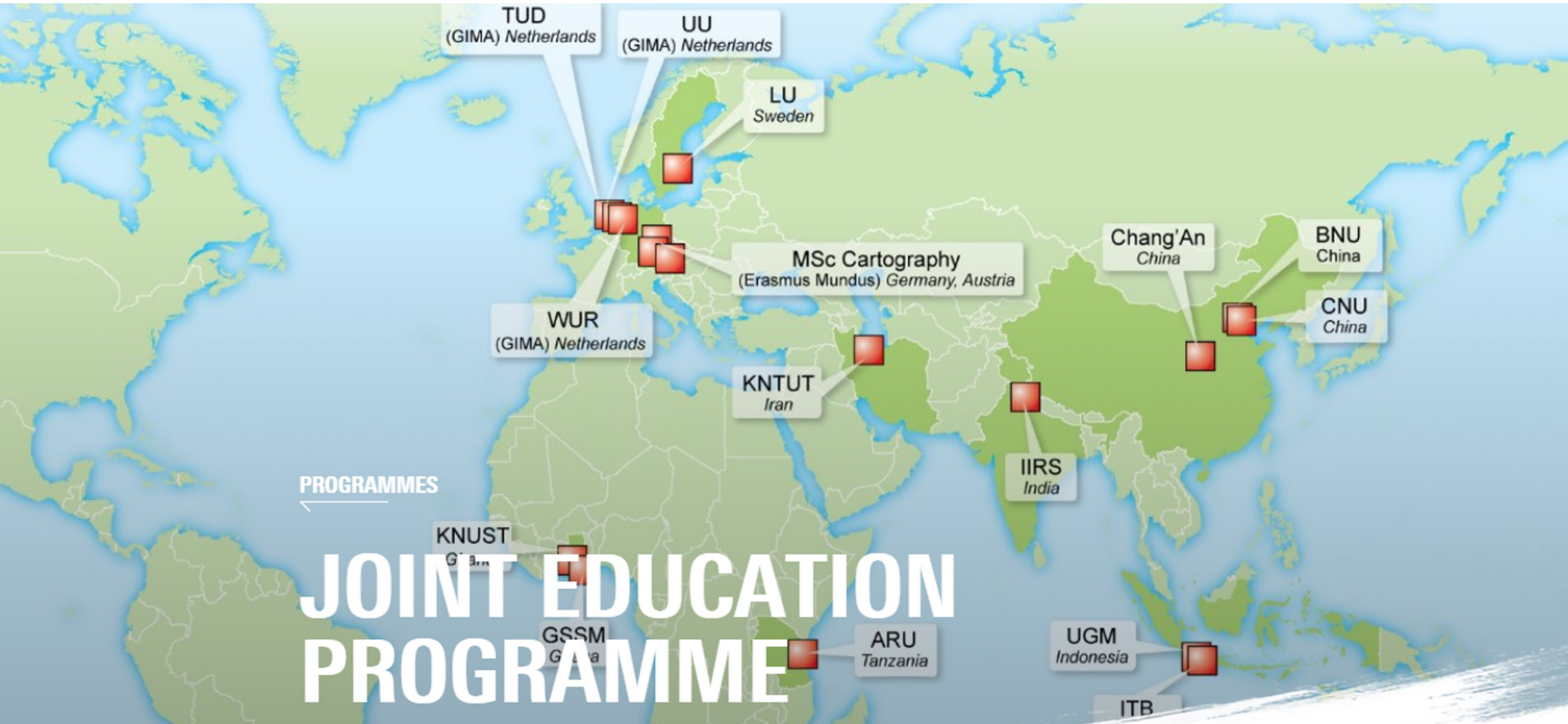
... and other smaller programmes and courses

- **and of course partner in**



**Cartography M.Sc.**

# EDUCATION PARTNERSHIPS ITC



# UT / ITC PARTNER IN INTERNATIONAL MSC CARTOGRAPHY



Prof. Menno-Jan Kraak  
Local Director



Paulo  
Raposo



Mihir Desai



Poornoima  
Badrinath



Barend Köbben  
Local Coordinator

[b.j.kobben@utwente.nl](mailto:b.j.kobben@utwente.nl)



Franz-Benjamin  
Mocnik



Manuela Londoño  
Jiminez



Vanessa  
Henkes



Yuri Engelhardt



Tea Muraj



Tianqi Li



UNIVERSITY OF TWENTE.





# Intro days programme

---

## INTRODUCTION DAYS UNIVERSITY OF TWENTE – ITC

From 24–28 April we will organize our introductory activities. We hope that these activities will be good for academic and social reasons! And of course, the culmination is on Friday 28<sup>th</sup>, when you will defend your ERP.

All activities are in **building Langezijds, room LA 1235**, except where stated otherwise.

### General overview

Mon 24	Starting 13:00 Welcome and introduction to the (brand new!) ITC building and facilities.
Tue 25	Introduction to the ITC Cartography research group; Test your ERP presentations
Wed 26	Social outing: Getting to know Enschede and the Twente region; Diner in town
Thu 27	Kings Day (national holiday)
Fri 28	ERP defences (10:00 – 15:00)



# Intro days programme

---

## Monday 24 April

13:00	Welcome with lunch – Head of the GIP dept., Raul <u>Zurita Milla</u>
14:00	Enrollment/Student Administration – Student Affairs, Theresa <u>vd Boogaard</u>
14:30	Introduction to the (brand new!) ITC building and facilities
15:00	The ERP & beyond: the next steps towards your thesis
16:00	Introduction to library facilities by librarian Marco <u>Veller</u> (online)

## Tuesday 25 April

10:30	Coffee & Cake – staff & students informal welcome
11:00	Introduction to the Cartography Research group and the VisUse lab
12:30	Lunch break
13:00	Testing your ERP presentation: all student present their ERP (10 minutes), peers and staff provide tips, remarks, discussion points (15 minutes)
±16:00	end

## Wednesday 26 April: Enschede & Twente

Getting to know Enschede and Twente. We will take you to on a tour along places important for students (e.g. show you the main campus and its facilities) but also teach you a bit about the city Enschede and the region Twente. The exact program will depend on the weather – we will arrange transport and lunch. We will end the day with a joined dinner in town.

09:30	Pick-up at ITC International Hotel (IIH, back entry)
	Tour of the UT Campus: Library, <u>Vrijhof</u> , Bastille, <u>sportfacilities</u> , etcetera
11:30	Drive via <u>Twente Village</u> – FC Twente – <u>canal/harbour - Rutbeek</u> – <u>Smalenbroek</u>
	<u>Smalenbroek 'coulissen'</u> = typical <u>Twents</u> agriculture/estate landscape
	<u>Buurserzand 'heide &amp; hoogveen'</u> = natural moor landscape
	Drive to <u>Haarmühle</u> water mill
13:00	Lunch at <u>Haarmühle</u> restaurant
14:00	Drive to Enschede <u>Roombeek</u>
14:30	visit <u>Museumfabriek</u> ( <u>Twente museum</u> )
16:00	Enschede town
±17:30	Return at IIH
19:00	<u>Joined dinner</u> in Enschede ( <u>location tbd</u> ).

## Thursday 27 April: King's Day

King's Day: this is a National Holiday, when the Dutch celebrate their King's birthday with flea markets, games and other activities and parties. The ITC building (and most other UT buildings) are closed this day.

From 10:00 – 11:35 the ERP defences at TUW take place. You are invited to join online on Zoom to support your peers (Oskar Baumann, Sacha Schlumpf and Julia Schiller).

<https://tuwien.zoom.us/j/65653971274?pwd=bE1xZHV3cThUdENyK0xTTUxHQUt2UT09>

Meeting ID: 656 5397 1274 Password: x4wGB7M1

There is the "Koningsfestival" with lots of events in town [ <https://www.visit-enschede.com/events/koningsfestival-enschede> ] but also a party on campus [ <https://www.dereactie.nl/en/> ]

## Friday 28 April: ERP defences

Because ERP defences are public, we invite everybody to join in person in room **LA 1235** to support your fellow students. Each student will present their ERP using their own laptop. The coordinator will organise a parallel Zoom session (because the reviewers are not in Enschede, and your fellow students from elsewhere can also join).

Note that the defence is 30 minutes: a presentation of not more than 10 minutes by the student, followed by a discussion of not more than 15 minutes. This is followed by a short retreat for discussion of the assessment by the Thesis Assessment Board and feedback to the student.

slot	student	topic	chair	supervisor	reviewer
10:00 – 10:30	Tianqi Li	Effectiveness of 2D and 3D symbols on virtual globes	M-J Kraak	M-J Kraak	E Hauthal (TUD)
10:40 – 11:10	Poornima Badrinath	Understanding the gaps of multimodal transportation in two cities built differently and mapping time and space of what works and what doesn't	M-J Kraak	M-J Kraak	S Mukherjee (TUD)
11:20 – 11:50	Mihir Desai	Environmental Forensics: Investigating new trends in critical cartography	M-J Kraak	M-J Kraak	O Ignateva (TUW)
break					
13:00 – 13:30	Manuela Londoño Jiménez	Materiality in Cartography, A First Attempt to Evaluate its Usefulness	M-J Kraak	F-B Mocnik	H Kumke (TUM)
13:40 – 14:10	Vanessa Henkes	Designing a framework for the creation of user-specific National Park maps of Yellowstone NP and Grand Canyon NP	M-J Kraak	F-B Mocnik	F Ledermann (TUW)
14:20 – 14:50	Tea Muraj	The Cartographic Visualization of Processes and Changes: changes over the years in the city of Vienna	M-J Kraak	F-B Mocnik	N Liu (TUM)

Zoom Meeting:

<https://utwente-nl.zoom.us/j/5245562128>

| Meeting ID: 524 556 2128. Passcode: m-carto



# FACILITIES

Well equipped building:

- Lecture rooms
- MSc rooms
- Auditorium
- State-of-the-art computer facilities
- Laboratory facilities
- Restaurant
- Library

UNIVERSITY  
OF TWENTE.  
FACULTY ITC

# FACILITIES

## LODGING ACCOMMODATION

- Well furnished rooms or apartments

## STUDENT SUPPORT

- Student affairs office
- Sports and social activities
- Lifelong e-mail accounts

See one of our latest YouTube movies:

<https://www.youtube.com/watch?v=WPjF-aklxNs>

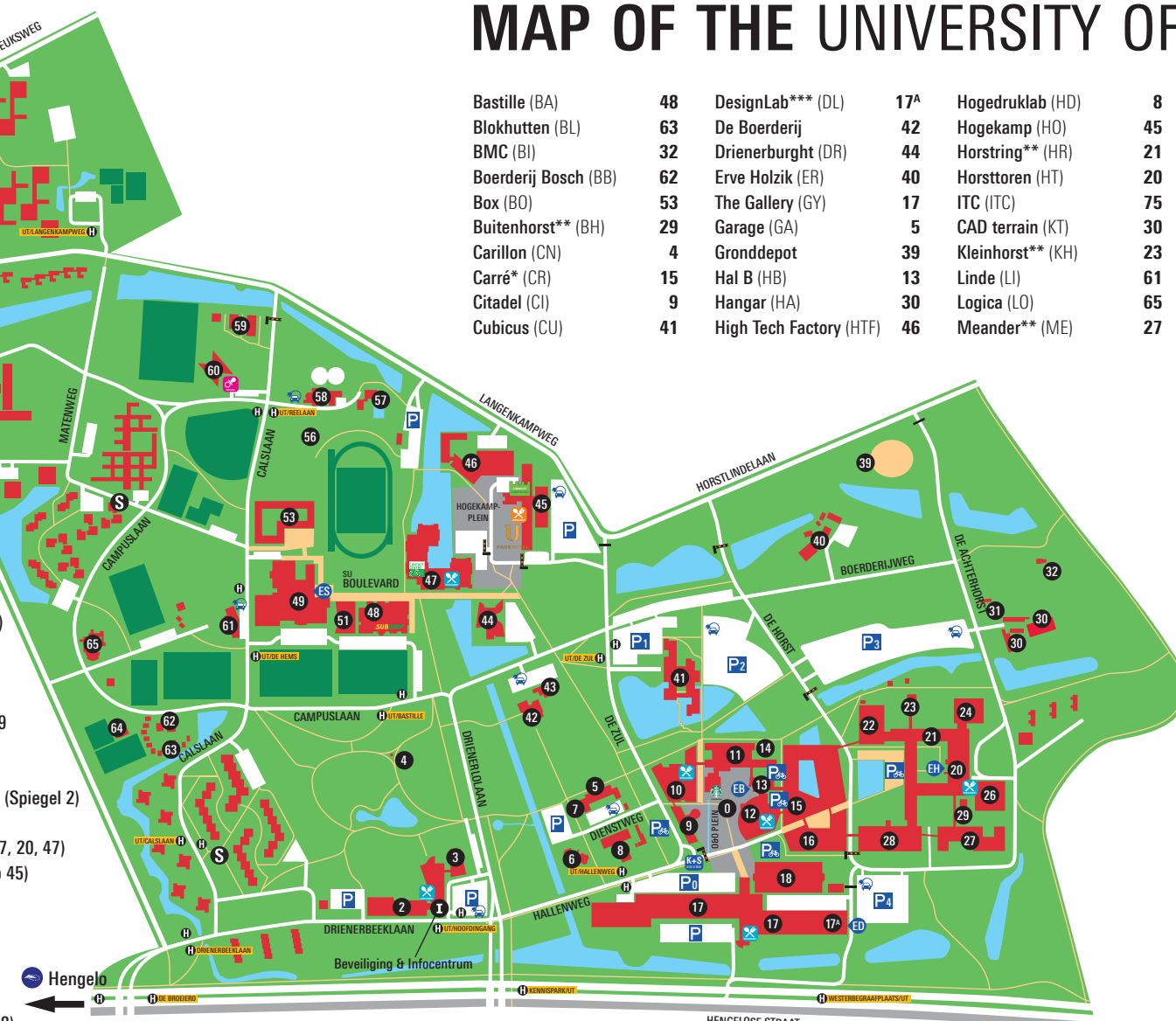
UNIVERSITY  
OF TWENTE.  
FACULTY ITC

# MAP OF THE UNIVERSITY OF TWENTE



Bastille (BA)	48	DesignLab*** (DL)	17 <sup>A</sup>	Hogedruklab (HD)	8	Mondriaan (MO)	59
Blokhutten (BL)	63	De Boerderij	42	Hogekamp (HO)	45	Nanolab* (NL)	16
BMC (BI)	32	Drienerburght (DR)	44	Horstring** (HR)	21	Noordhorst*** (NH)	24
Boerderij Bosch (BB)	62	Erve Holzik (ER)	40	Horstoren (HT)	20	O&O plein (OO)	0
Box (BO)	53	The Gallery (GY)	17	ITC (ITC)	75	Oosthorst** (OH)	26
Buitenhorst** (BH)	29	Garage (GA)	5	CAD terrain (KT)	30	Openluchttheater (OUT)	56
Carillon (CN)	4	Gronddepot	39	Kleinhorst** (KH)	23	Paviljoen (PA)	6
Carré* (CR)	15	Hal B (HB)	13	Linde (LI)	61	Ravelijn (RA)	10
Citadel (CI)	9	Hangar (HA)	30	Logica (LO)	65	Schuur (SR)	43
Cubicus (CU)	41	High Tech Factory (HTF)	46	Meander** (ME)	27	Seinhuis (SH)	7

- Parking
- Bike park
- Barrier
- Closed road
- Charging point electric car
- K+S Kiss & Ride (O&O plein 0)
- \*Entrance via Hal B 13
- \*\*Entrance via Horstoren 20
- \*\*\*Entrance DesignLab 17<sup>A</sup>
- \*\*\*\*Entrance Sportcentrum 49
- Student housing
- Bus stop
- Campus Security & Infocentre (Spiegel 2)
- Dentist / Doctor (Sleutel 58)
- Canteen (Building 2, 10, 12, 17, 20, 47)
- Restaurant U Park (Hogekamp 45)
- U Parkhotel (Hogekamp 45)
- Starbucks (Zilverling 11)
- Subway (Bastille 48)
- Daycare (Vlinder 60)
- TechMed Centre (TechnoHal 18)
- MESA+ Institute (Nanolab 16)
- Digital Society Institute (Zilverling 11)
- Contact Centre (Vrijhof 47)



Station Enschede Kennispark  
 BTC Hengelosestraat 705  
 Therm Capitool 40a  
 Watersportcomplex  
 A 35  
 ITC 75  
 Enschede

UNIVERSITY OF TWENTE.

Downloadable at [www.utwente.nl/campusmap](http://www.utwente.nl/campusmap); for building details see [www.utwente.nl/buildings](http://www.utwente.nl/buildings)

# ENSCHEDÉ

SMALL REGIONAL CENTRE

- 160.000 inhabitants
- lively student city & campus
- shopping and cultural centre

UNIVERSITY  
OF TWENTE.  
FACULTY ITC



# TWENTE REGION

## GREEN & RURAL SURROUNDINGS

- bordering Germany
- great for hiking & biking
- even sometimes “hilly”...!

© AEROPHOTO-SCHIPHOL

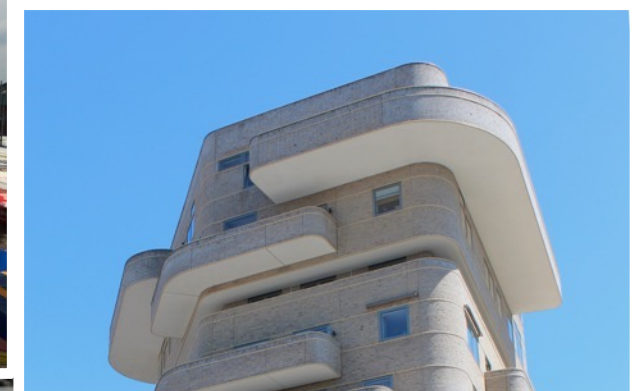
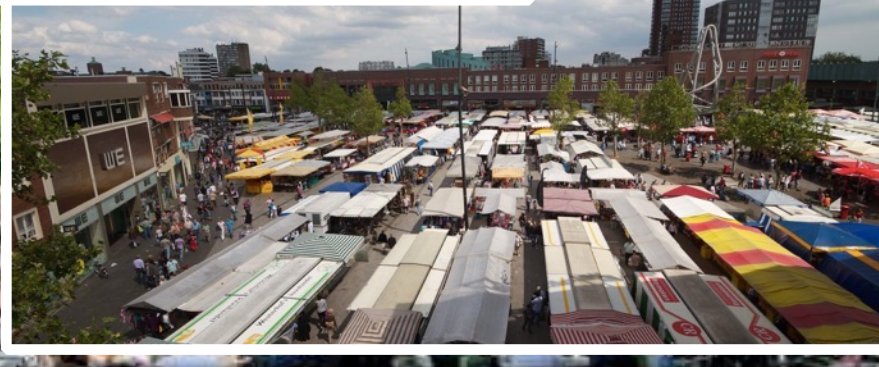
UNIVERSITY  
OF TWENTE  
FACULTY ITC



# ENSCHEDÉ

SMALL REGIONAL CENTRE

- 160.000 inhabitants
- lively student city & campus
- shopping and cultural centre





# TWENTE REGION

## GREEN & RURAL SURROUNDINGS

- bordering Germany
- great for hiking & biking
- even sometimes "hilly"...





## The Extended Research Proposal -- Defense

---



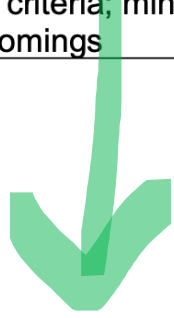

- The Proposal Assessment Board:
  - Your supervisor
  - Chair (responsible professor)
  - Reviewer (from other University)
  - They've studied your written proposal beforehand
- 10 min presentation by you
- 10-15 min discussion with the board
- Board decides on a result

# The Extended Research Proposal -- Result

**The Proposal Assessment Board agreed that:**  
 (Tick the appropriate boxes and fill in where required)

- The MSc Research Proposal has been checked for plagiarism.

The following mark is assigned to the MSc Research Proposal:

Fail		Completed	
Very weak	Weak	Sufficient	Good
....	....	....	....
Major shortcomings; not likely to overcome	Major shortcomings; possible to overcome	Complies with the above criteria; minor shortcomings	Complies with the above criteria
<b>Main comments:</b>			
 No-Go...	 refine (before 10 May)	 Go on, but take remarks into account...	 Excellent, go on!

# Stage 2 ( $\pm 2$ months)

- Second phase will be concluded with a midterm presentation to your Thesis Assessment Board (around 1 July)
- Your Thesis Assessment Board will make an *informal* mid-term assessment (no mark will be given) of the mid-term presentation. You will get feedback on your progress



## Writing the thesis – getting there

---

- *Work with your supervisor...!*
- Regular meetings with the group (students & coordinator)  
=> any ideas on how often, when...?
- Available resources: ITC specific (see site\*): e.g. academic skills workbook, library skills, etc.
  - The ITC thesis template [[Word](#) | [LaTeX](#)]. This is used in the M-GEO course at ITC to layout and format the thesis. You can (but do not have to) use this, but remember that any layout you choose has to be preceded by the MSc Carto Coverpage you can find on the [thesis page](#) (or directly download [here](#)).
  - At ITC we have published a thesis research guide titled "Research Concepts & Skills". It is an elaborate guide that helps you in theoretical concepts (e.g. regarding types of logic) as well as practical things (e.g. citation rules):
    - Volume 1: Concepts [\[PDF\]](#)
    - Volume 2: Skills [\[PDF\]](#)

\*the go-to site is: <https://kartoweb.itc.nl/msc-carto-thesis>

# Stage 3 ( $\pm 2.5$ months)

- Thesis should be about 50 pages (excluding appendices). You use the thesis template of the partner university where the thesis is written, with a common MSc Cartography cover
- The complete and final thesis must be submitted to the Thesis Coordinator and to the members of the Thesis Assessment Board at least two weeks before the oral thesis defence
- The **standard** deadline for thesis submission is 7 September.

 The thesis defences take place two or more weeks after the submission of the complete thesis (21-26 September)





# Timeline

---

- until 17 Apr      Students start work on ERP in contact with their supervisors. What is an ERP, actually? See some expli of last year [here...](#)
- 1 April            Official start of semester 4
- 17 Apr             Deadline for Extended Research Proposal (ERP).
- 24-27 April        ERP defences: TUM 24th, UT 25th 28th, TUD 26th 2 May, TUW 27th.
- ± 1 July            **Midterm presentations:** 26 June @ TUW, 29 June @ TUD, 4 July @ TUM, 6 July @ UT
- 7 Sep              Deadline for submitting final thesis
- End Sep            Thesis defences & assessment:
- 21 September @ TUW
  - 22 September @ TUD
  - 25 September @ TUM
  - 26 September @ UT